

MARCONI VALVES

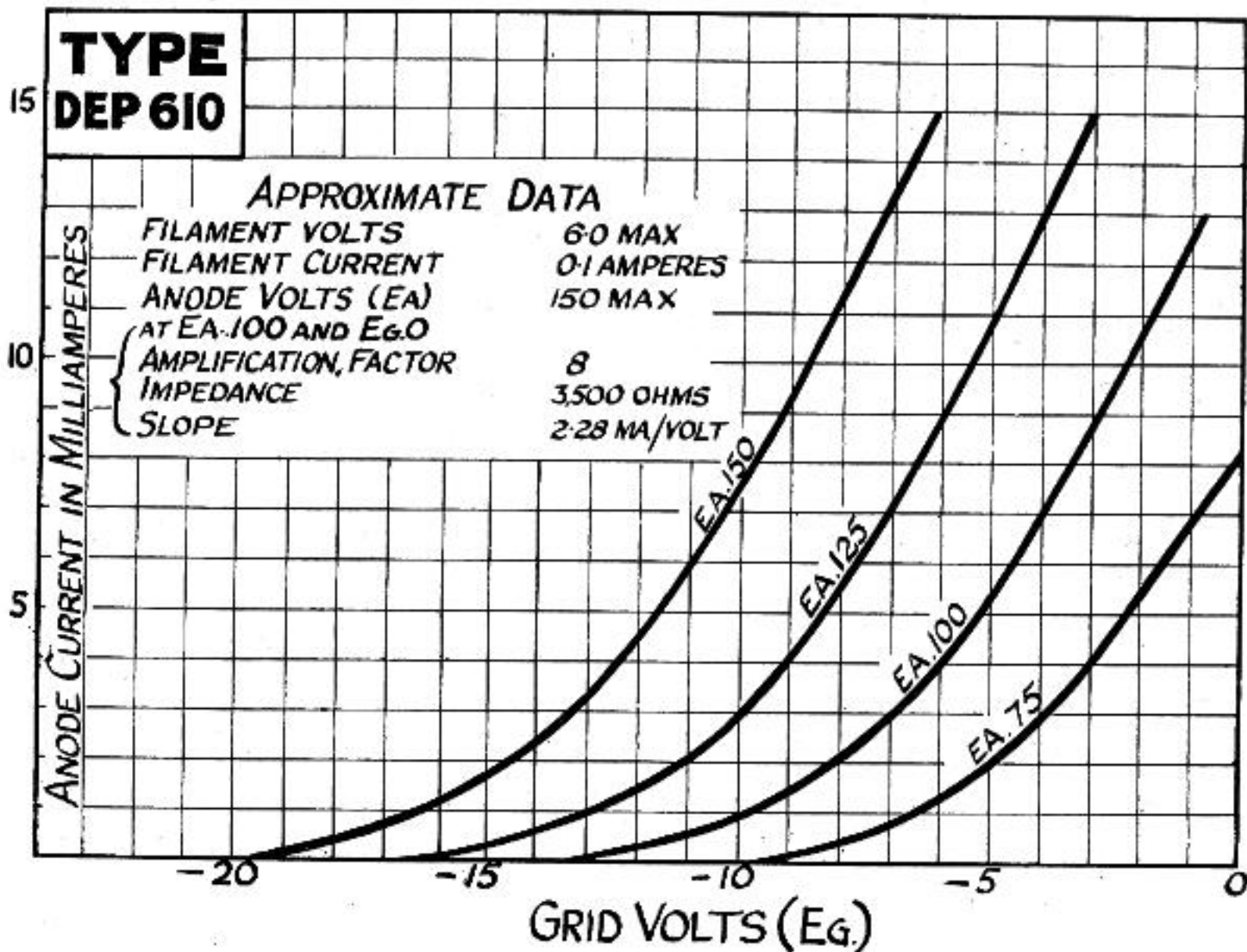
MARCONI VALVES

TYPE DEP 610

Approximate Operating Data—Neglecting Resistance of Output Circuit.

Anode Volts	Negative Grid Bias Volts	Anode Current in Milliamperes (approximate)
75	4½	2.5
100	6	4.0
125	7½	6.5
150	9	9.5

When used in the last stage of a 2 or 3 valve amplifier, it is desirable to employ a high tension battery voltage of 120 to 150, to ensure complete absence of distortion. If used in a low frequency amplifier in stages preceding the last position about 75 to 100 volts H.T. is suitable. In all cases the requisite grid bias as shown in the preceding table should be employed.



Characteristic Curve of Average DEP 610 Valves.

The valve in the purple box